



FLEXIBLE  
SPECIALTY  
PRODUCTS

# Multi-Flex

## Material Specification

### Material Description

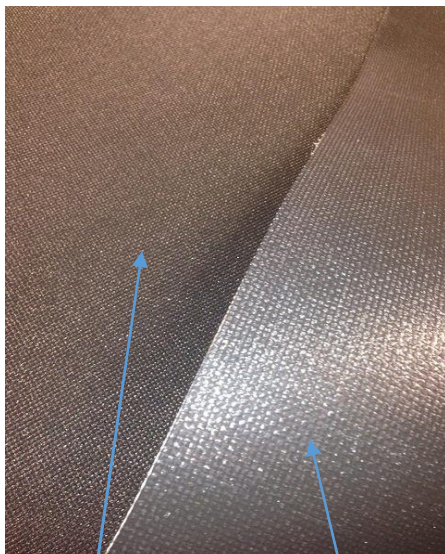
Our Multi-Flex expansion joint material is our most versatile and economical product. The 5 mil inner PTFE gas barrier provides the protection required for all types of dry service. The durable outer layer is constructed of a PTFE coated fiberglass that provides the longevity and flexibility required for any application handling clean, dry air. This two layer composite material provides a tough, flexible barrier.

The Multi-Flex material can withstand continuous temperatures to 600F and is not affected by UV light. All Multi-Flex materials are easily repaired on-site with a repair kit provided by FSP. Contact our sales staff to see if this is the correct material for your application



#### Construction:

PTFE Coated Woven Fiberglass load bearing component with 5 mil PTFE film laminated to interior side to form a 2 layer composite



PTFE Coated  
Fiberglass Cloth

5 mil PTFE Gas Barrier

### Physical Properties

**Maximum Temperature:** 600°F (316°C) Continuous

**Minimum Temperature:** -80°F (-62°C) Continuous

**Weight:** 55 oz/yd<sup>2</sup> (1870 g/m<sup>2</sup>)

**Thickness:** 0.040+(1.0 mm)

**Tensile Strength (Warp):** 1200 lbs/in (10508 N/50 mm)

**Tensile Strength (Fill):** 1200 lbs/in (10508 N/50 mm)

**Maximum Pressure:** 5 PSI (3518 mm wc)

**Minimum Pressure:** -3 PSI (-2110 mm wc)

Contents the property of  
Flexible Specialty Products, LLC

This information supplied in good faith and is based on information currently available. Contact a sales representative at FSP to verify suitability to specific applications and design conditions